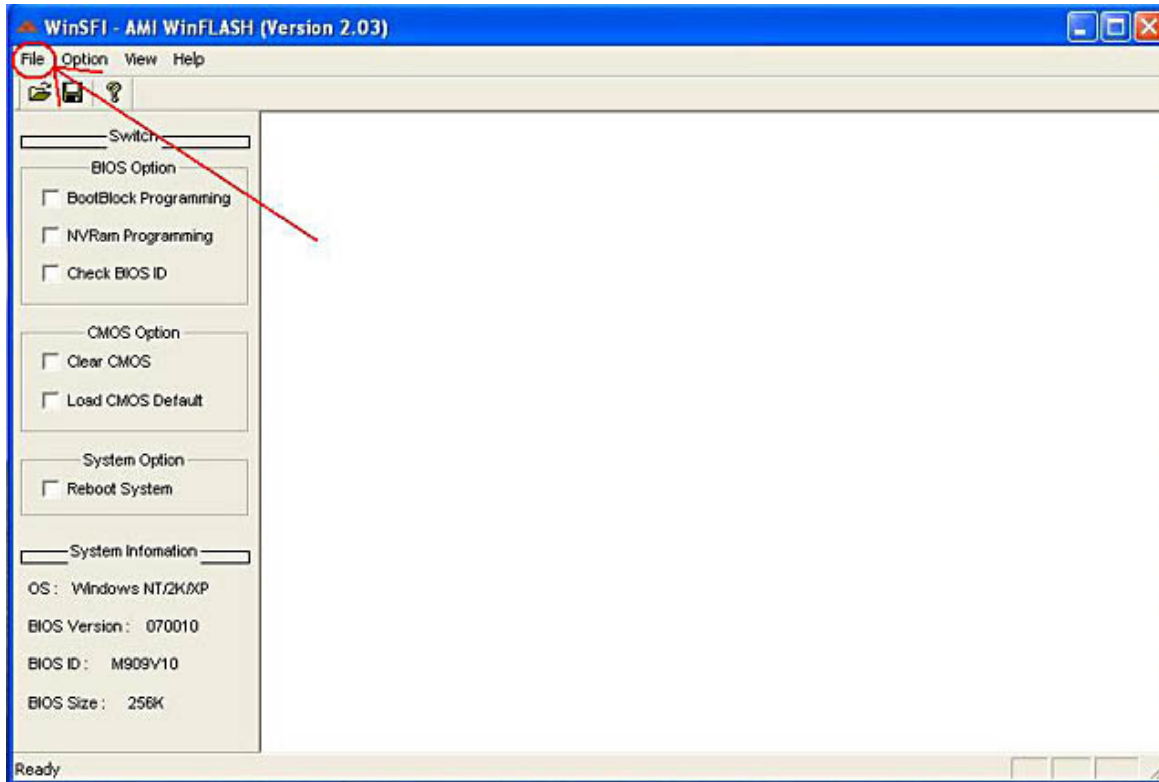


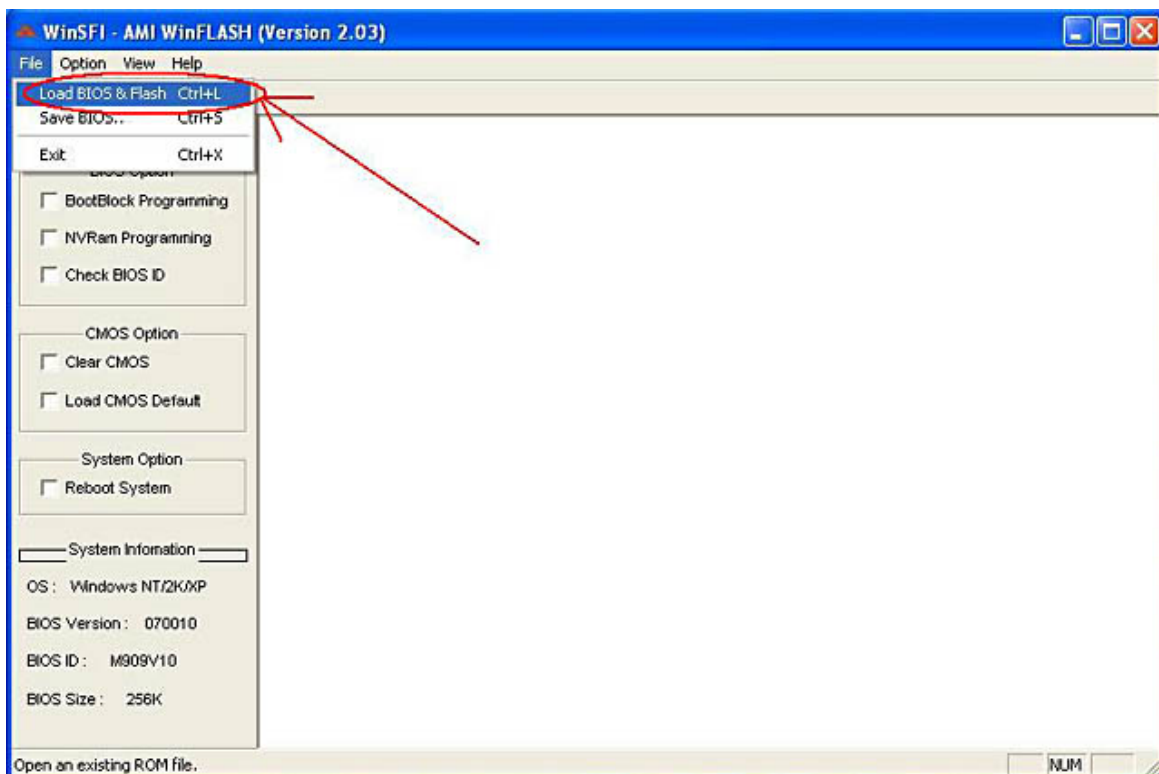
👉 How to use AMI Windows Flash Utility?

1. Copying the " WsFlxxx.exe " file onto desktop of Windows.
2. Selecting and executing the " WsFlxxx.exe ".
3. Following below steps,

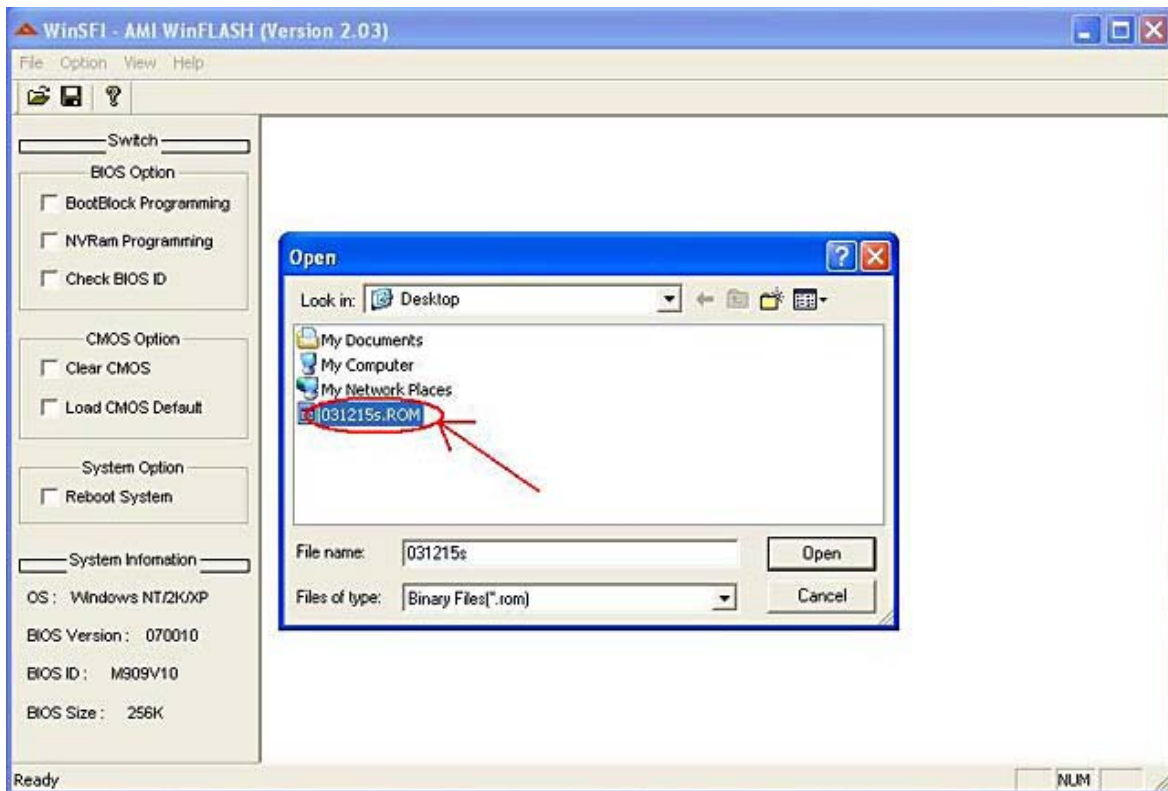
3-1. Selecting menu bar's " File "



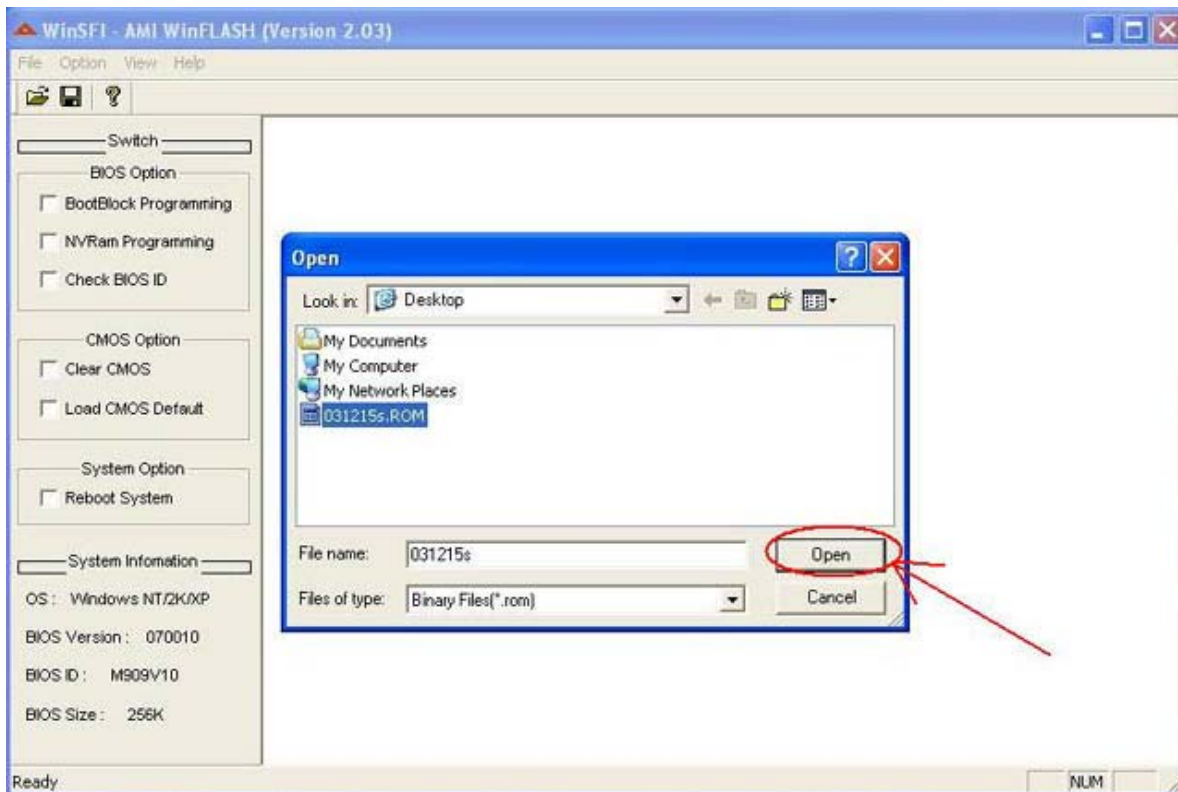
3-2. Selecting pull down menu's " Load BIOS flash "



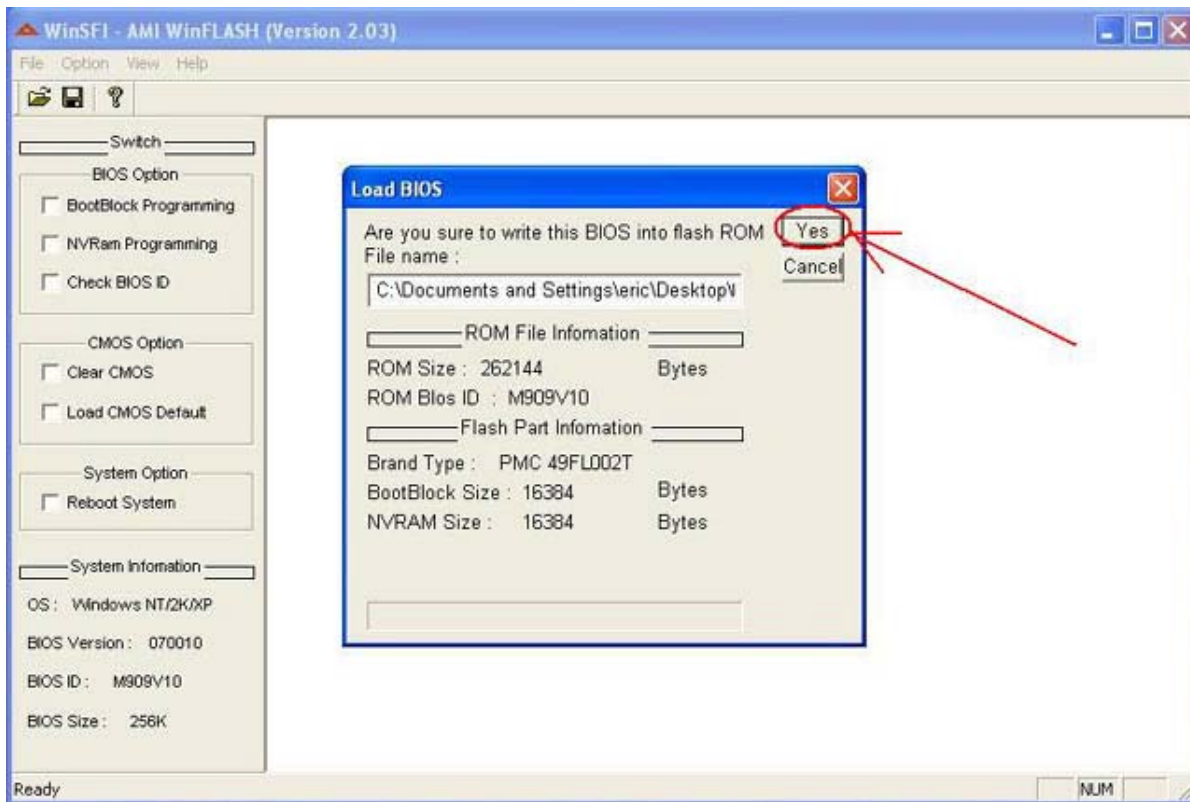
3-3. Selecting the ROM file ex." 031215s.rom "



3-4.Pressing " Open " button.



3-5.Executing " yes ".



4. Restart the machine.